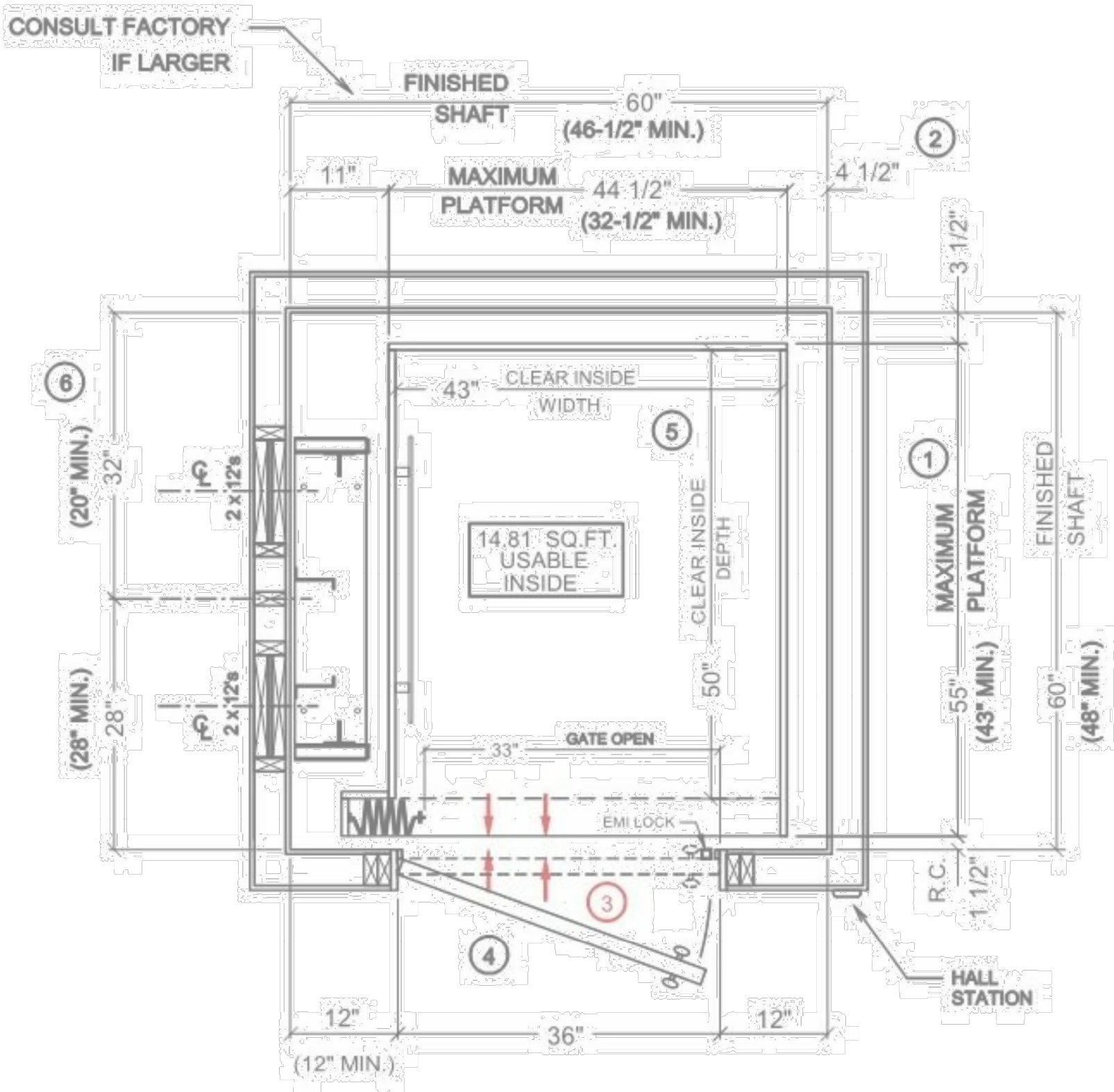


NOTE: DRAWINGS AS PROVIDED BY
ELEVATOR MANUFACTURER.



HOISTWAY PLAN

NOTES:

- 1 IF PLATFORM SIZE IS REDUCED, THEN THE BLOCKING IS TO BE POSITIONED SUCH THAT IT IS CENTERED ON THE PLATFORM. (PLATFORM DEPTH / 2) + 2" = CENTERLINE OF RAIL BLOCKING OFF OF INSIDE FRONT WALL. (MIN. 28" DIMENSION)
- 2 CAR TO WALL (CTW) DIMENSION IS 3-1/2" MIN.
- 3 HOISTWAY DOORS & FRAMES MUST BE INSTALLED TO COMPLY WITH THE AUTHORITY HAVING JURISDICTION REQUIREMENTS. THESE DIMENSIONS VARY. CONSULT YOUR RESIDENTIAL ELEVATORS SALES REPRESENTATIVE FOR DETAILS PRIOR TO CONSTRUCTION.
- 4 HOISTWAY DOORS TO BE SOLID CORE (BY OTHERS.)
- 5 CLEAR CAB DIMENSIONS BASED ON A 3/4" FLAT WALL CAB DESIGN.
- 6 MIN. CLEARANCE TO ALLOW FOR MOTOR/ BRAKE/ GEARBOX

All Traction Elevators require an access panel for emergency lowering. Access panel size and location must be discussed with your Residential Elevators Sales Representative prior to construction.

ELECTRICAL REQUIREMENTS (BY G.C.)

- CAGE LIGHT FIXTURE AND LIGHT SWITCH
- DEDICATED 240 VAC, 30 AMP 1/4" x 4" JUNCTION BOX (6" MINIMUM PIGTAIL WIRE)
- DEDICATED 120 VAC, 20 AMP 1/4" x 4" JUNCTION BOX (6" MINIMUM PIGTAIL WIRE)
- PHONE LINE IN 4" x 4" JUNCTION BOX
- GFCI 120 V. RECEPTACLE (BY G.C.)

OVERHEAD CLEARANCE
102" MINIMUM FOR 6'-8" CAB
108" MINIMUM FOR 7'-4" CAB
114" MINIMUM FOR 8'-0" CAB

Secondary Access Door
(Not allowed in all states)
Hinged Machinery Access
16" H x 18" W Minimum
24" H x 24" W Maximum
(NOT ALLOWED IN ALL STATES)
(By G. C.)

Primary Access Door
Machinery Access
16" H x 18" W Minimum
24" H x 24" W Maximum
(By G. C.)

Hoistway Walls
Line elevator shaft with
Plywood or Drywall.
Check with local building
codes for thickness & fire
rating.
(By G. C.)

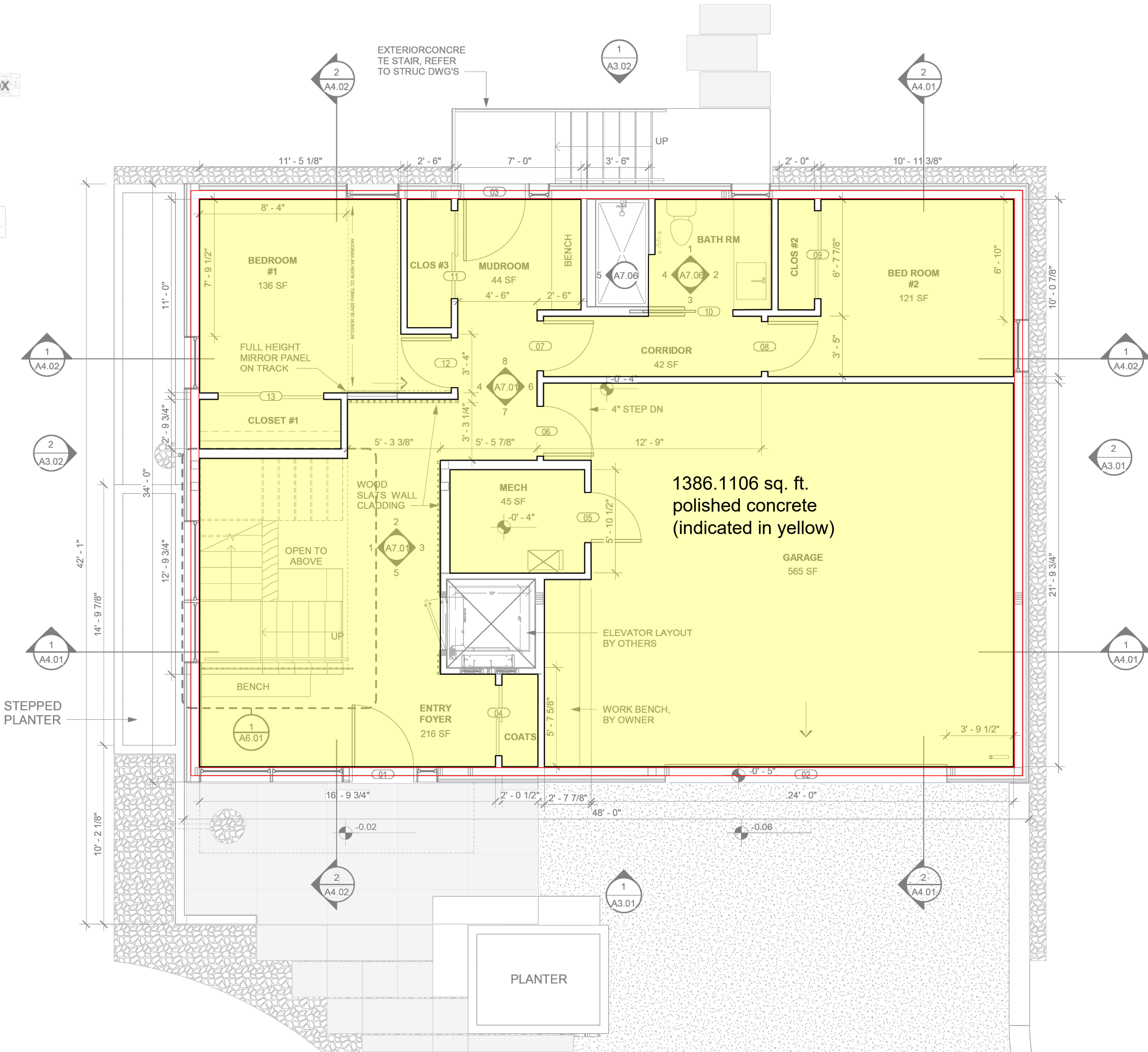
Landing Doors
2'-8" or 3'-0" Solid Core
doors recommended.
Consult with manufacturer
representative on
placement.
(By G. C.)

ELEVATOR PIT
MINIMUM 4" THICK REINFORCED
CONCRETE SLAB TO WITHSTAND
5100 LBS.

PIT DEPTH
8" MINIMUM

TYPICAL ELEVATION - HP-1

TYPICAL 2 STOP HOISTWAY LAYOUT



1 LEVEL 1
1/4" = 1'-0"

Construction Documents For:
**CODY AND LESLI FRANCIS
FRANCIS RESIDENCE**

Project: 20106-02

Issued MM/DD/YY
Project Status
REVISIONS

**LEVEL 1 -
FLOOR PLAN**

Scale: 1/4" = 1'-0"
Drawn: Author
Checked: Checker

A1.01

17655 CANBY ROAD
HAMILTON, VA 20158

**architecture
incorporated**
1902 campus commons drive
suite 101
reston, virginia 20191
Tel: 703.476.3900
Fax: 703.264.0733
www.archinc.com