

NEW STORAGE BENCH  
WITH REMOVABLE CUSHION.

10

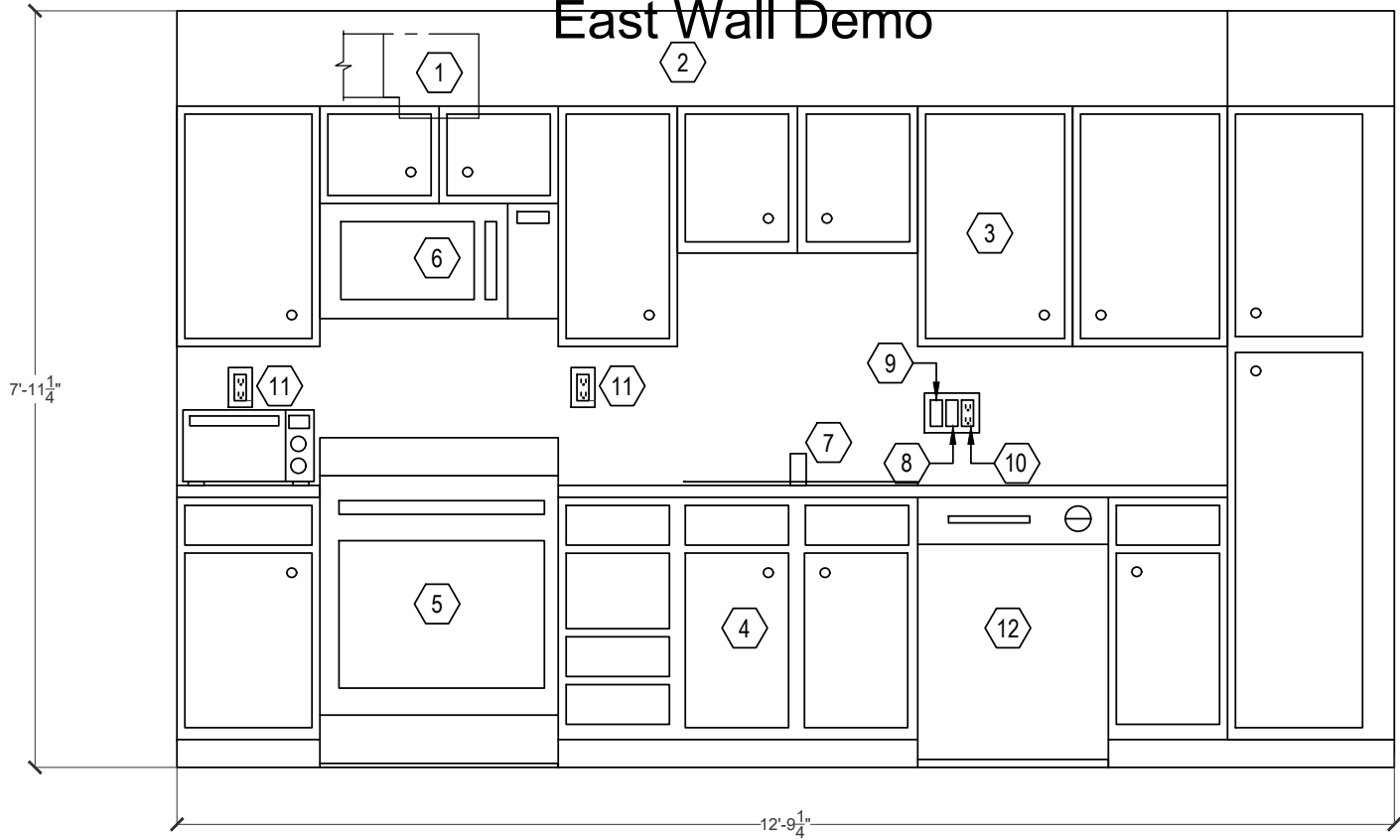
12

1. Replace floor
  - 1.1. Ceramic or vinyl. TBD
2. Re-insulate perimeter wall while the floor is ripped up. Provide R-20 foil-faced insulation with vapor barrier.
3. (6?) Recessed can lights
4. Repaint ceiling and all walls
5. Replacing the light will require running a new switch leg. the old fan had a proprietary wiring system.
6. New cold water piping under the floor. 3/4" copper with 1/4" armafex insulation.
7. New hot water piping under the floor. 3/4" copper with 1" fiberglass insulation.
8. New pvc sanitary pipe under the floor. slope 1/4"/ft if possible.
9. New pvc vent above the ceiling.
10. New 240V 30A circuit to a junction box in the wall with cover plate and access door in the cabinet.
11. All wiring to be #12 (except the 30A) solid copper with 20A breakers.
12. Install owner furnished light fixture.
  - 12.1. Tied to same circuit and switch as the others in the area.
13. Install a new 4 GPM water filter on the left master bath sink. Flush lines downstream of the filter.
14. Relocate light switch

14

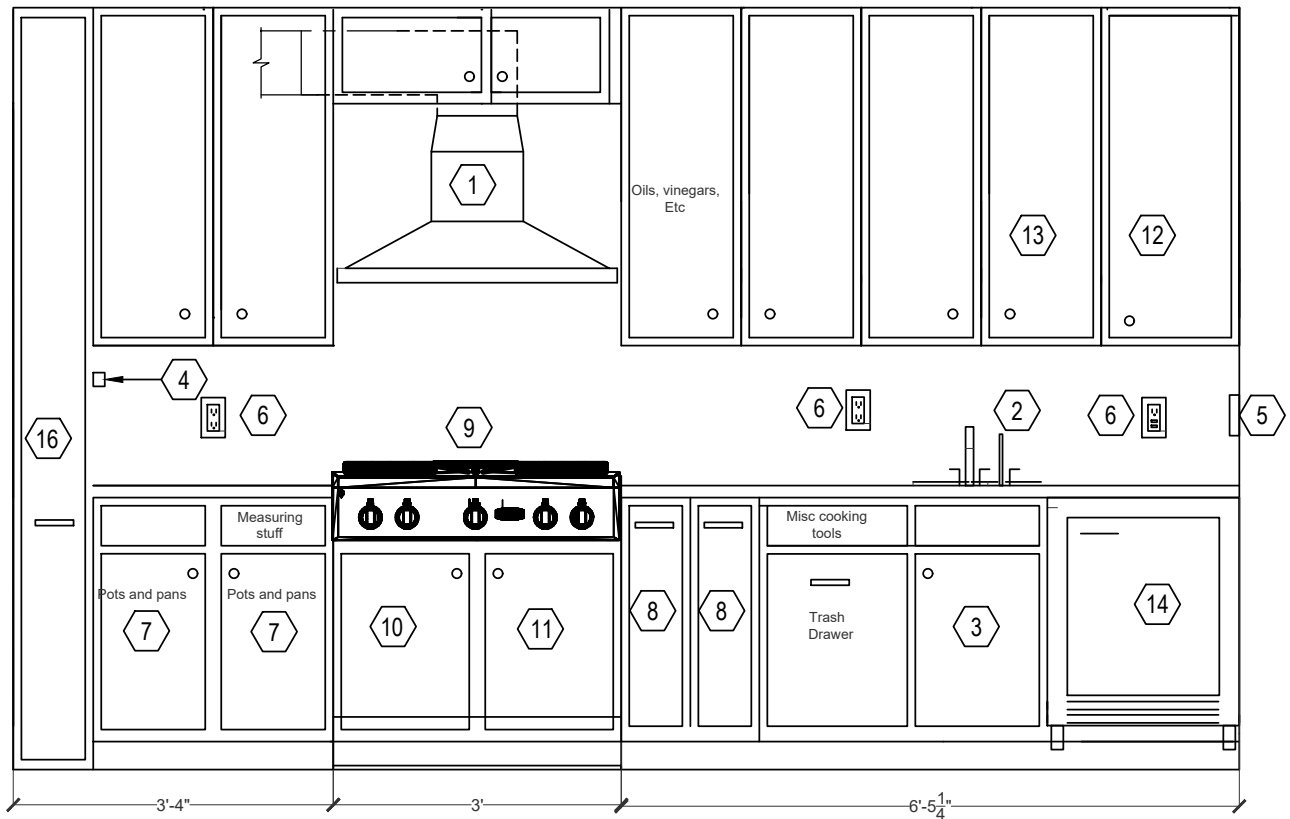
\$

## East Wall Demo



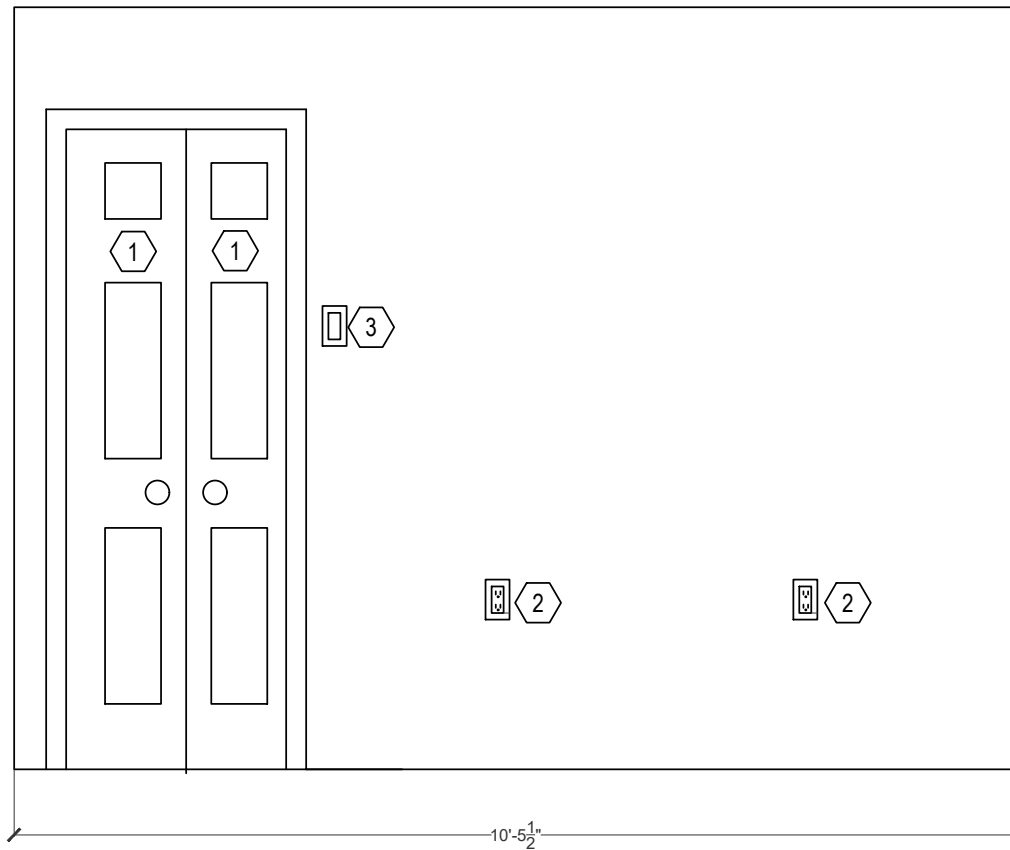
1. 6" Exhaust duct to stay; 3x10 duct to go. - extend to new location
2. Bulhead to be removed
3. All cabinets to be removed
4. Garbage disposal goes. The prep sink will get a new one.
  - 4.1. Move circuit to the new prep sink garbage disposal.
5. Stove goes
6. Microwave goes
7. Sink goes. Plumbing moves to prep sink location.
8. Garbage disposal switch moves over to prep sink.
9. Light switch moves to wall for LED strip lighting.
10. Outlet stays
11. Outlet moves
12. Dishwasher moves to other side.

# East Wall New



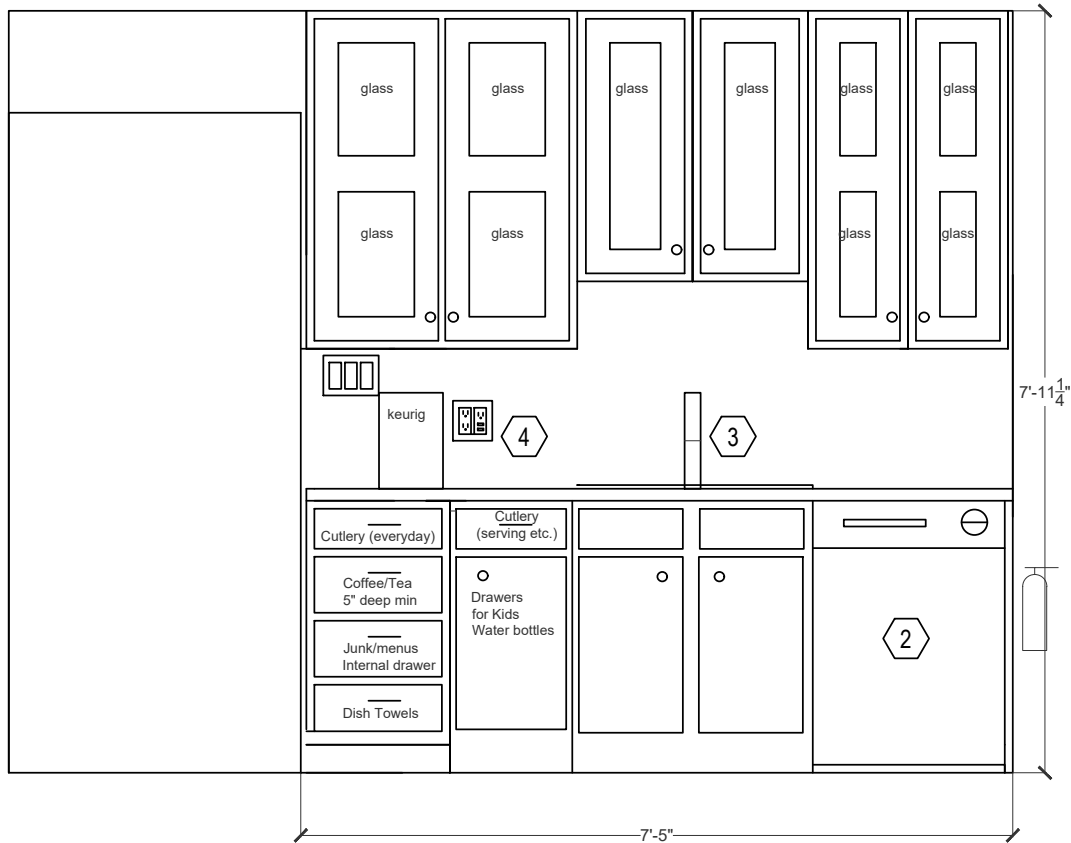
1. New 390 CFM hood with integrated fan. Connect to existing 6" duct.
  - 1.1. New dedicated circuit.
2. New 12" round prep sink.
  - 2.1. Faucet similar to Moen 5965SRS.
  - 2.2. New garbage disposal 3/4 hp. Similar to Badger 900.
    - 2.2.1. Relocate power from existing
  - 2.3. New filtered water dispenser, separate from the faucet.
3. Cabinet for water filter, garbage disposal, and step stool.
4. Magnetic knife block
5. (2) gang switch. One dimmer for undercounter light. One dimmer for half the east side track lighting.
6. Relocated receptacle.
7. Cabinet with drawers for pots and pans
  - 7.1. Toe kick drawers?
8. Slide out section for cooking utensils
9. 36" gas cooktop. GE monogram ZGU364NDPSS
10. Cabinet for vertical tray divider
11. Drawers for small appliances (rest will go in pantry)
12. Chalkboard?
13. Built in lazy susan?
14. Undercounter freezer. Beverage-Aire UCF24HC
  - 14.1. New circuit
15. New under-counted LED lighting with wall dimmer switch. Tie into existing circuit in the area.
16. Vertical slide out for brooms, etc. Install new receptacle behind it (off the same circuit as the others)

# West Wall Demo



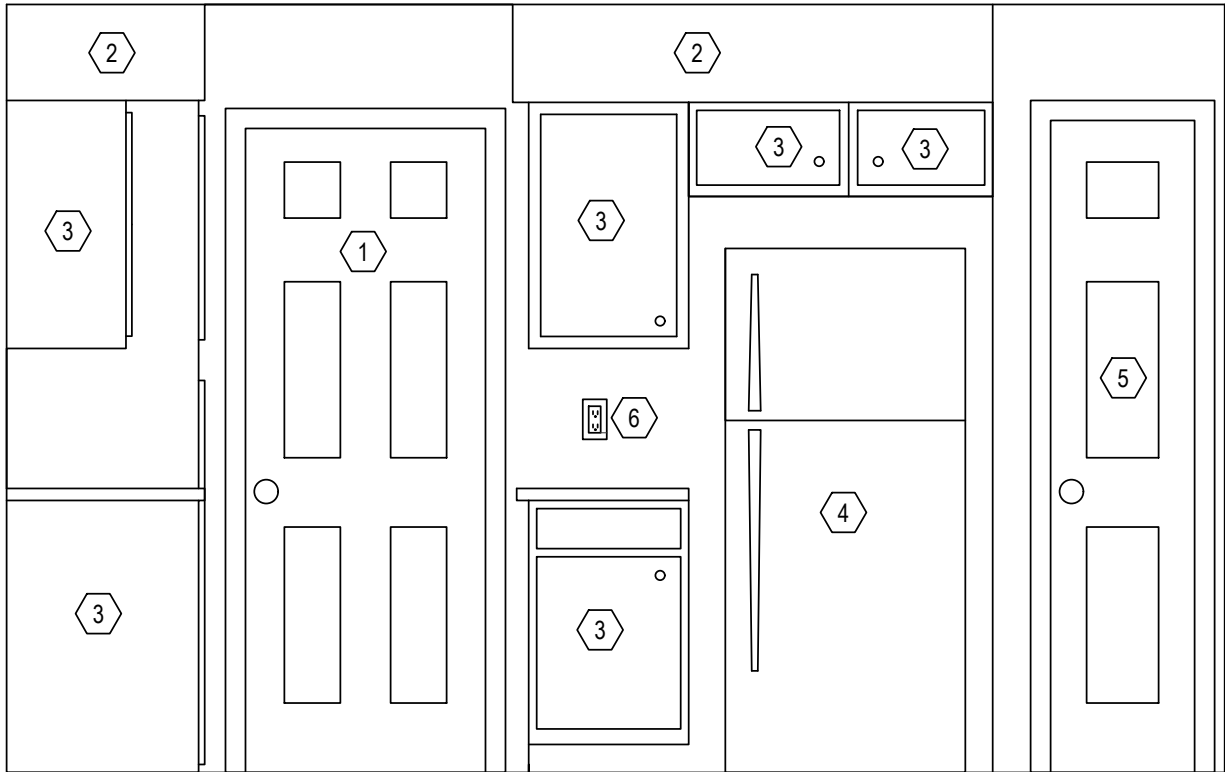
1. Doors come out. Opening widened to 36" +/-
2. Outlet moves
3. Switch for fan/light comes out. Replaced with (3) gang switch in different location.

# West Wall New



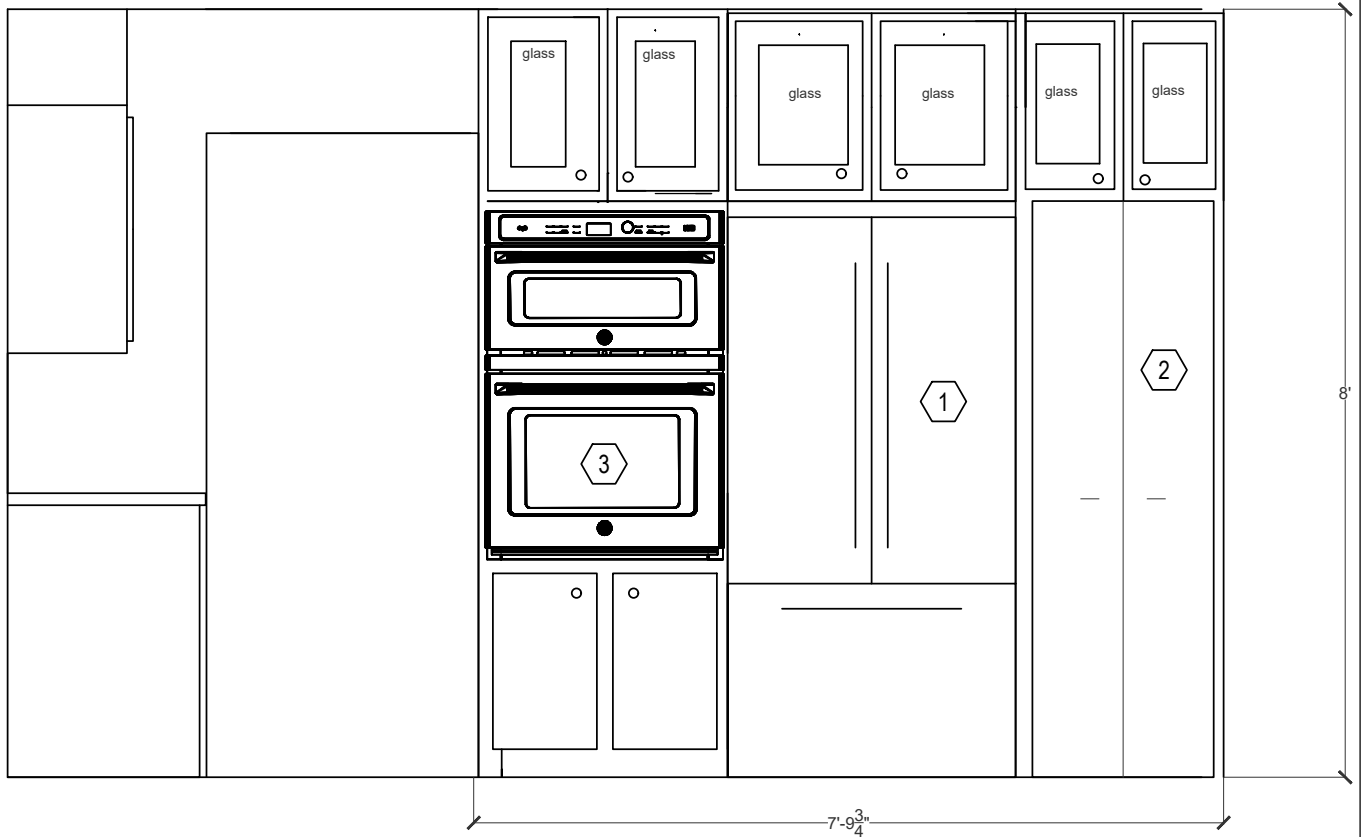
1. New under-counted LED lighting with wall dimmer switch. Tie into existing circuit in the area.
2. Relocated dishwasher
  - 2.1. Move circuit from old location
  - 2.2. All new plumbing from the other side
3. New sink.
  - 3.1. Undermount
  - 3.2. New plumbing from other side
  - 3.3. Faucet Moen 7565ESRS
    - 3.3.1. New plug under the sink. Off the convenience circuit
  - 3.4. New garbage disposal 3/4 hp. Similar to Badger 900I
    - 3.4.1. new circuit
4. New quad receptacle. Same circuit as old receptacles on the wall.

# South Wall Demo



1. Door comes out. Opening widened to 36" +/-
  - 1.1. Need to move the lightswitch in the dining room to a different wall.
2. Bulhead to be removed
3. All cabinets to be removed
4. Refrigerator goes.
5. Pantry gets ripped out to be rebuilt out of cabinetry.
6. Counter receptacle stays

# South Wall New



1. GE café™ series energy star® 23.1 cu. ft. counter-depth french-door refrigerator - CWE23SSHSS
  - 1.1. New water connect.
  - 1.2. New circuit.
2. Cabinetry pantry with drawers.
3. New double oven/microwave. GE Cafe CT9800SHSS
  - 3.1. New 120V circuit for top
  - 3.2. New 240V circuit for bottom